

Frontier Central Schools Are Soaring To New Heights!



The SOAR Project

S

SAFETY

O

OPERATIONS

A

ACADEMICS

R

RENOVATIONS

Agenda

- ▶ Capital Project Planning Process
- ▶ SOAR Project Focus
- ▶ Project Scope Highlights
- ▶ Potential Timeline
- ▶ Financing Plan
- ▶ Vote Information



Capital Project Planning Process

- ▶ **Long-range planning initiative led by Facilities Committee**
- ▶ **Building Condition Survey (BCS)**
 - Mandated to be performed every 5 years by NYSED
 - Used to identify, organize and prioritize needs
 - Includes estimated costs of identified items
- ▶ **Instructional initiatives**
- ▶ **Evaluated “wants” vs. “needs”**
 - Identified **Project Focus** areas
 - Researched various options
 - Weighted costs vs. benefits
 - Continued feedback from community & Board of Education



SOAR Project Focus

SAFETY



- Secure and safe entrances
- Public address and alarm systems
- Pedestrian and vehicle safety/circulation improvements
- Playground safety improvements
- Asbestos abatement

OPERATIONS



- Energy efficiency upgrades
- Boiler replacements
- Mechanical, electrical and plumbing system upgrades
- Office improvements

ACADEMICS



- STEAM (Science, Technology, Engineering, Arts, and Mathematics) program spaces
- Physical Education program and athletic field improvements
- Flexible instructional spaces
- Classroom improvements

RENOVATIONS



- Area roofing replacements
- Restroom updates
- Kitchen & cafeteria reconstruction
- Pool system replacements
- Lobby improvements
- Locker room updates

District-Wide Improvements

- ▶ Emergency blue light notification system
- ▶ Secured entries



Pinehurst Elementary

- ▶ Classroom renovations
 - Asbestos abatement
 - Flooring
 - Ceilings
 - Lights
 - Cabinetry
 - White boards & tack boards
 - Painting
- ▶ Renovate toilet rooms
- ▶ New playground
- ▶ New secured entry
- ▶ Emergency blue light notification system



Pinehurst Elementary

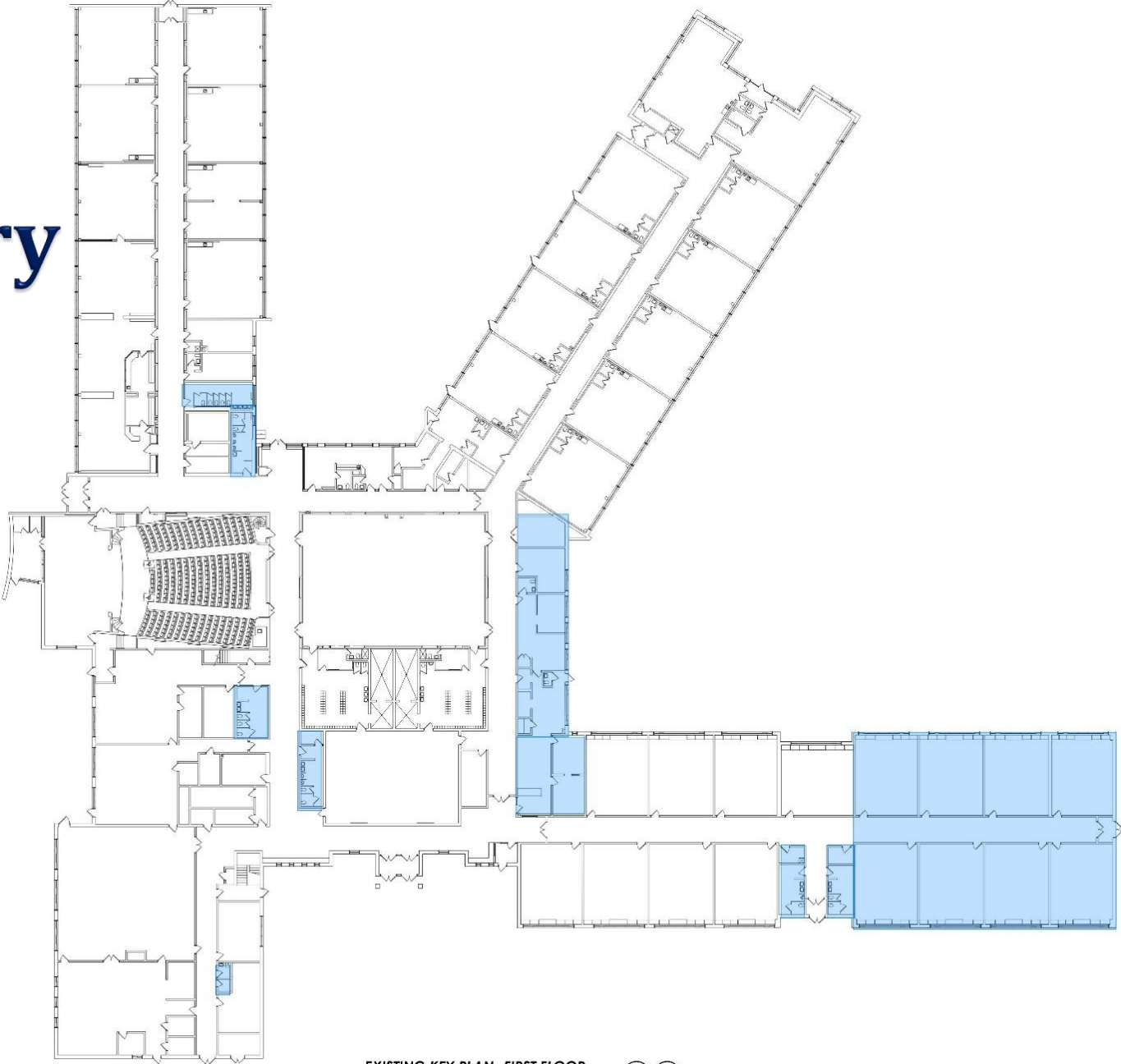
Overview of Work Areas



Pinehurst Elementary

**Phase 1
Work Areas**

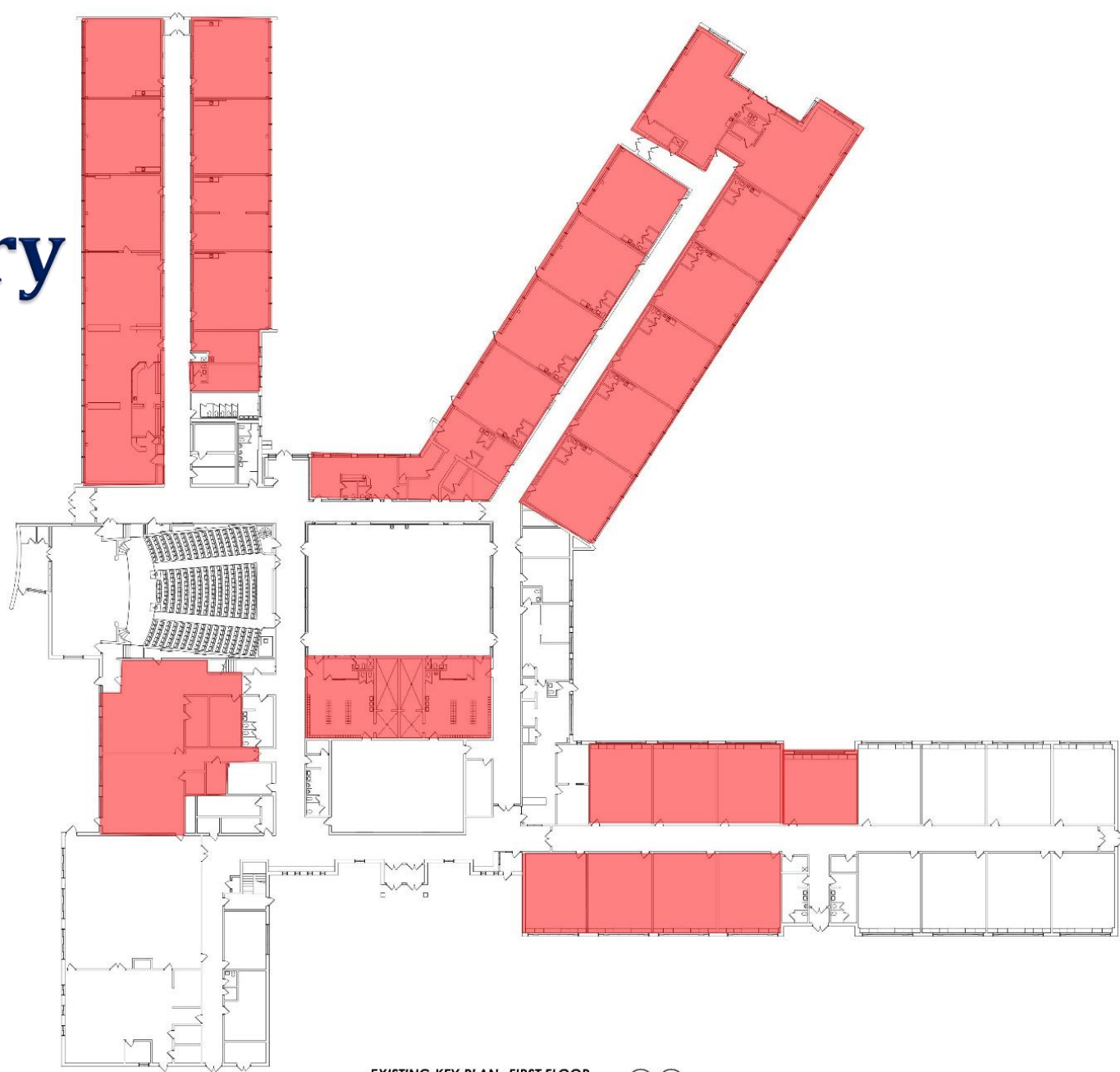
- ▶ Classrooms
- ▶ Bathrooms
- ▶ Main Office
- ▶ Nurse's Office



Pinehurst Elementary

Phase 4 Work Areas

- ▶ Abatement
- ▶ Classrooms
- ▶ Library
- ▶ Locker Rooms
- ▶ Art & Music



EXISTING KEY PLAN - FIRST FLOOR

SCALE: 1/16"=1'-0"



Big Tree Elementary

- ▶ Kitchen serving lines
- ▶ Miscellaneous asbestos abatement
- ▶ Exterior digital LED sign
- ▶ New playground
- ▶ Emergency Blue Light Notification System



Cloverbank Elementary

- ▶ Kitchen serving lines
- ▶ Miscellaneous asbestos abatement
- ▶ Expand playground & add rubberized play surface
- ▶ Emergency blue light notification system



Blasdel Elementary

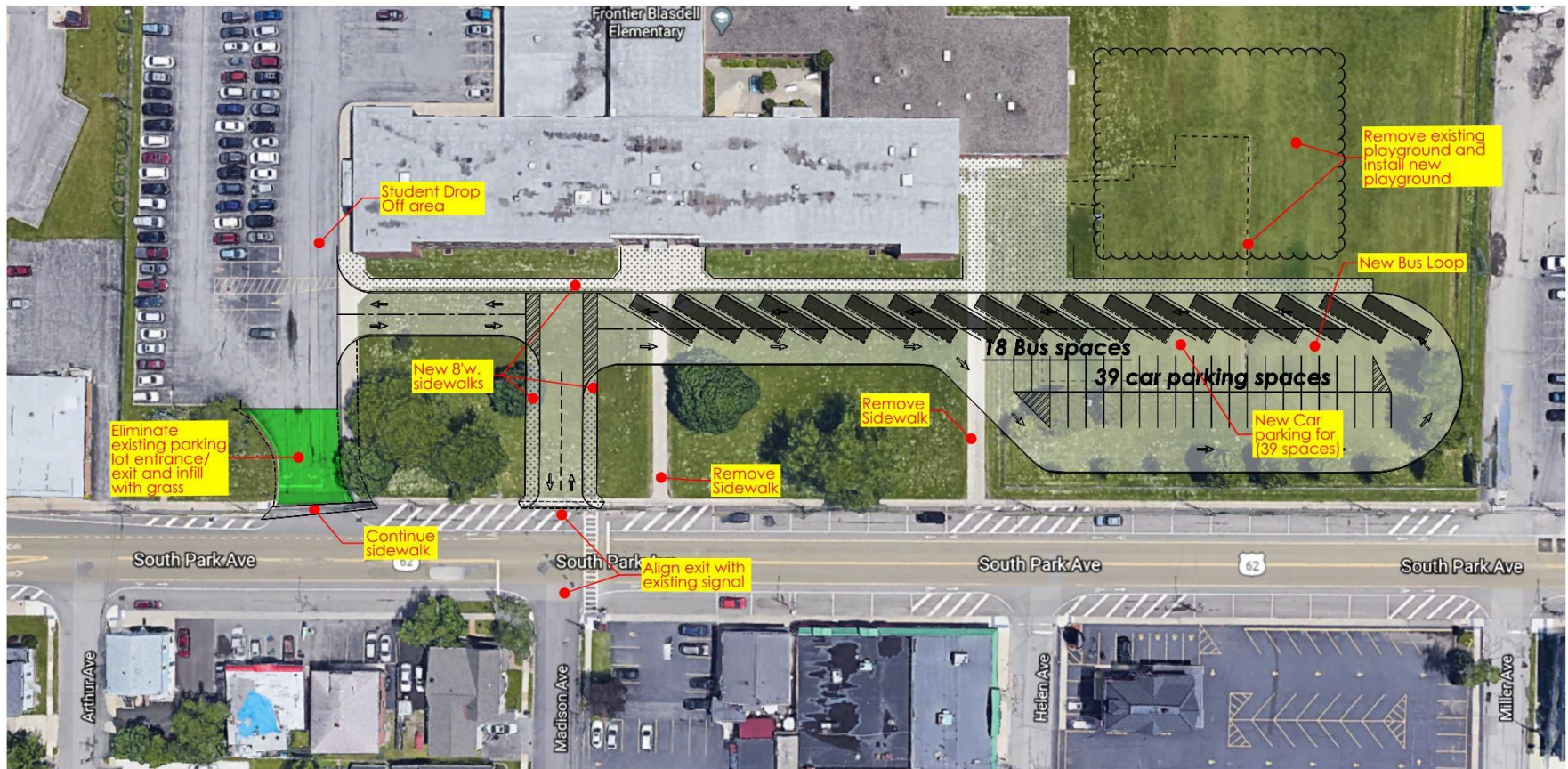
- ▶ New bus loop at front of building (to exit at Madison Ave. signal)
- ▶ Kitchen serving lines
- ▶ Miscellaneous asbestos abatement
- ▶ New playground
- ▶ Emergency blue light notification system



Blasdell Elementary

FRONTIER CENTRAL SCHOOL DISTRICT BLASDELL ELEMENTARY SCHOOL

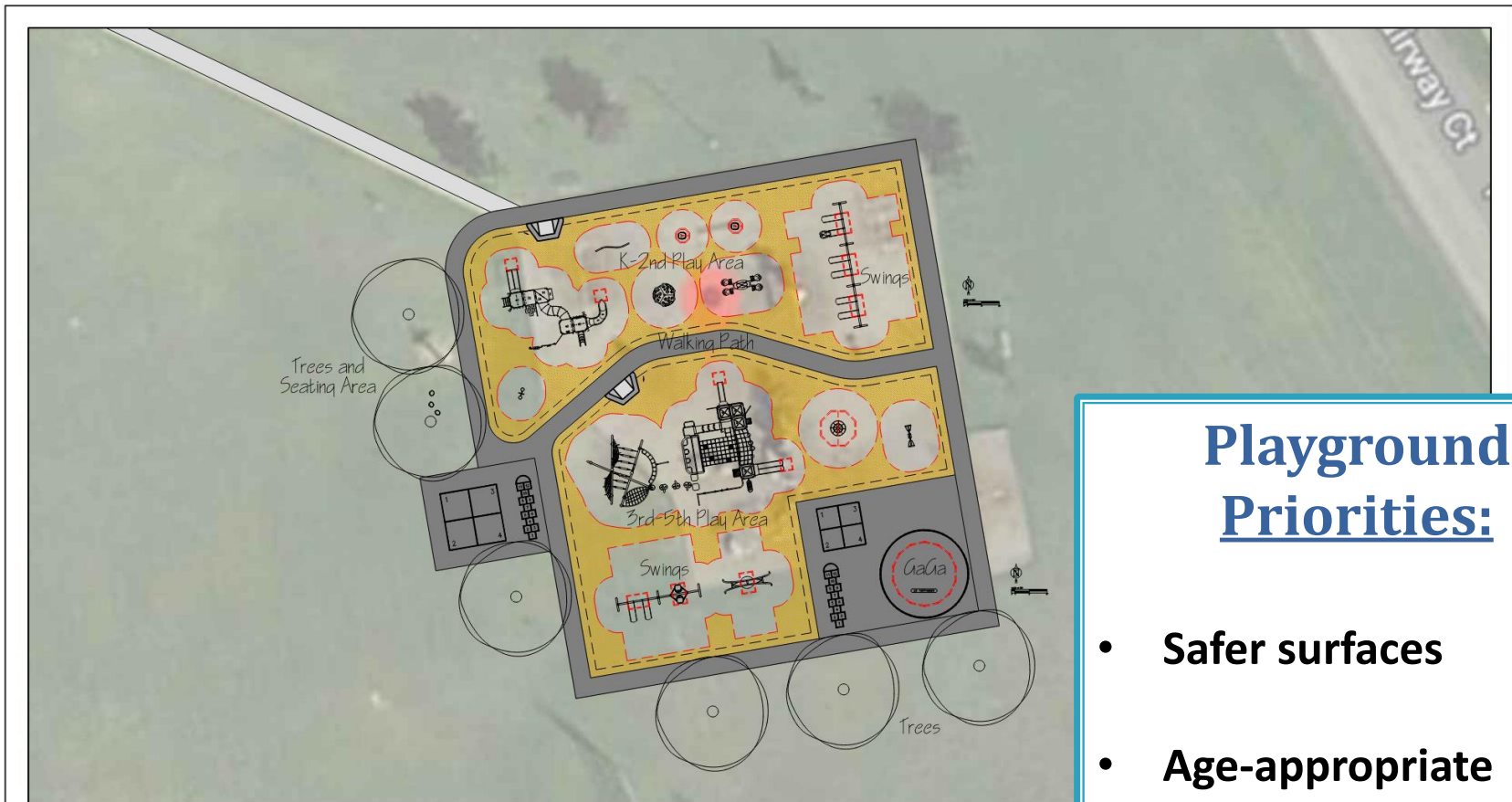
GORDON W. JONES ASSOCIATES
ARCHITECTS, P.C.
6757 MAIN STREET WILLIAMSVILLE, NY 14221 P: 716-633-9000
WWW.GWJARCHITECTS.COM



PRELIMINARY SITE PLAN- BUS DROP OFF/ STUDENT DROP OFF



Elementary School Playgrounds: Potential Concepts & Themes



Playground Priorities:

- Safer surfaces
- Age-appropriate equipment
- Imaginative themes

Elementary School Playgrounds: Potential Concepts & Themes



Potential Design Themes



Farm



Space



First
Responders



Adventure

Middle School

- ▶ Convert technology & team room to a STEAM suite
- ▶ Convert pool to PE (physical education) station
- ▶ Renovate gymnasium locker rooms
- ▶ Renovate auxiliary gymnasium

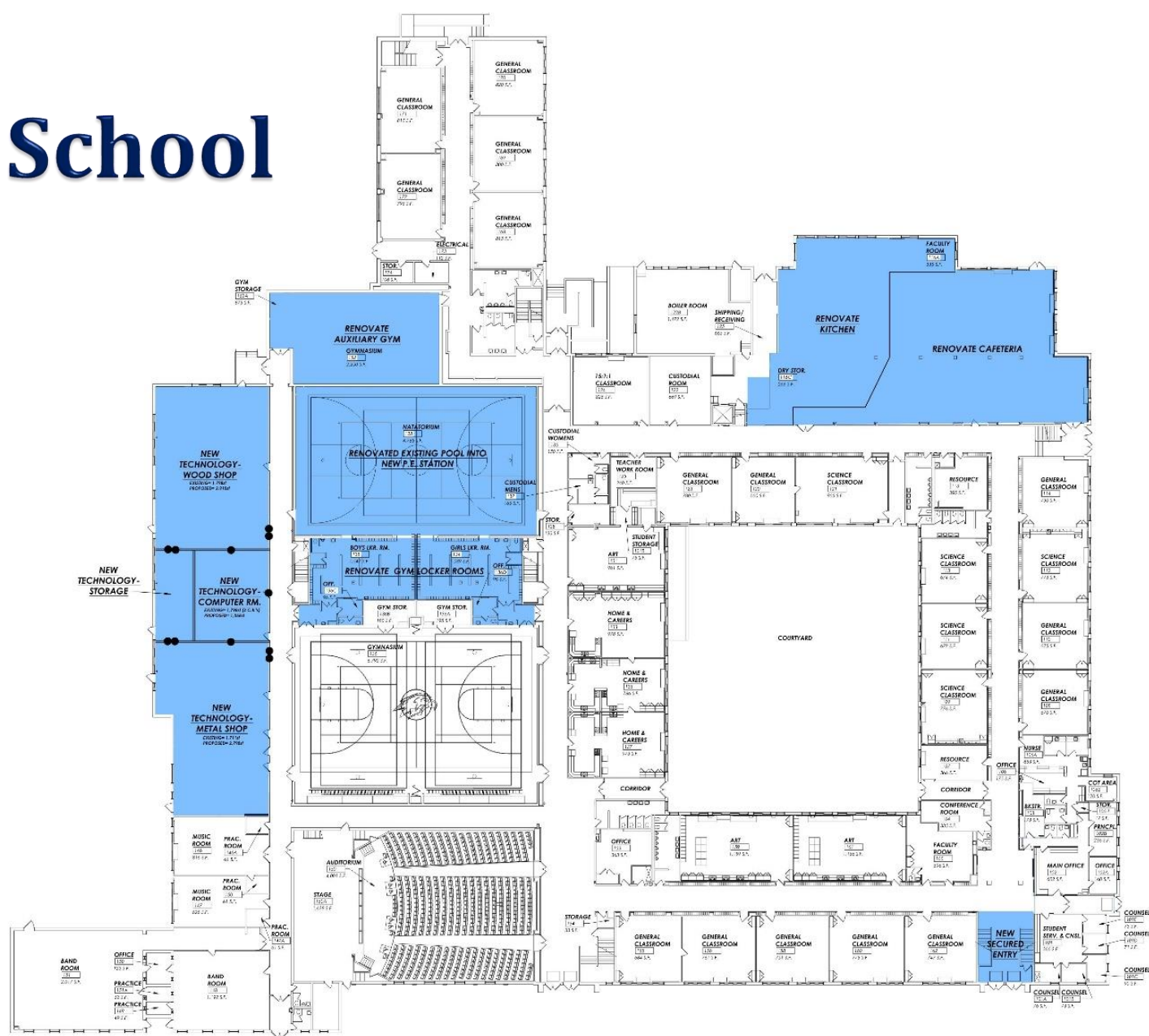


Middle School

- ▶ Kitchen/cafeteria renovations
- ▶ Replace three boilers
- ▶ Replace roof at technology wing, auditorium, gym, locker room & pool
- ▶ New secured entry
- ▶ Emergency blue light notification system



Middle School

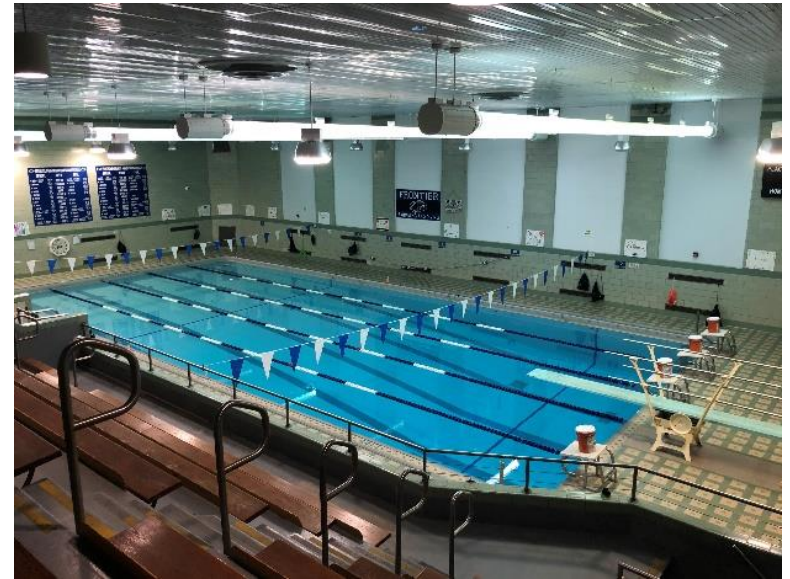


PRELIMINARY KEY PLAN- FIRST FLOOR

SCALE: 1/8" = 1'-0"

High School

- ▶ STEAM suite
- ▶ Gymnasium renovations
- ▶ Pool renovations
- ▶ Baseball field renovations (inc. synthetic turf field)
- ▶ New synthetic turf multi-purpose field

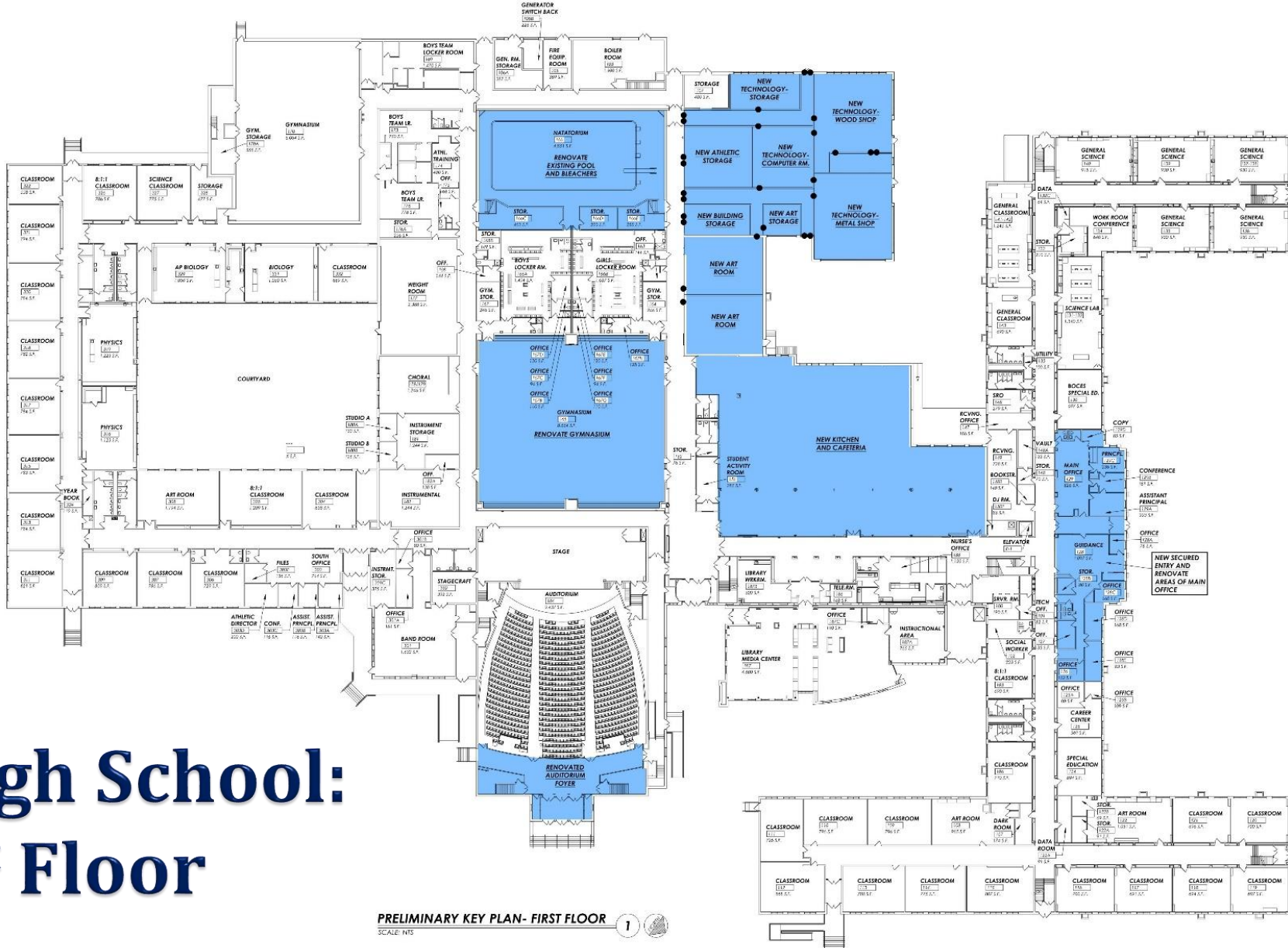


High School

- ▶ Auditorium lobby renovations 1st & 2nd floor
- ▶ Kitchen & cafeteria renovations
- ▶ Renovation to main office
- ▶ Replace roof at foreign language studies wing
- ▶ New secured entry
- ▶ Emergency blue light notification system



High School: 1st Floor

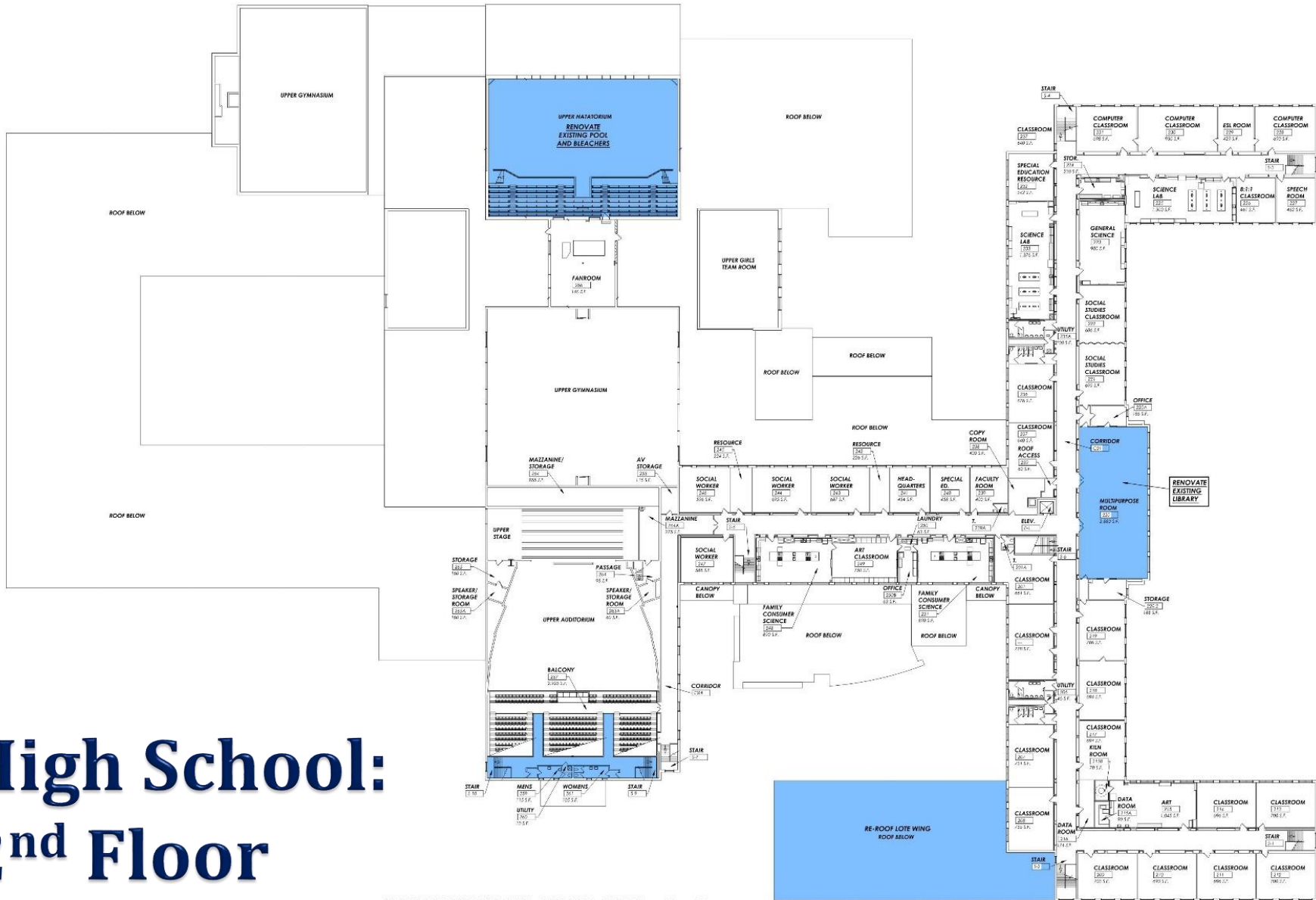


PRELIMINARY KEY PLAN- FIRST FLOOR

SCALE: 1/8" = 1'-0"

1





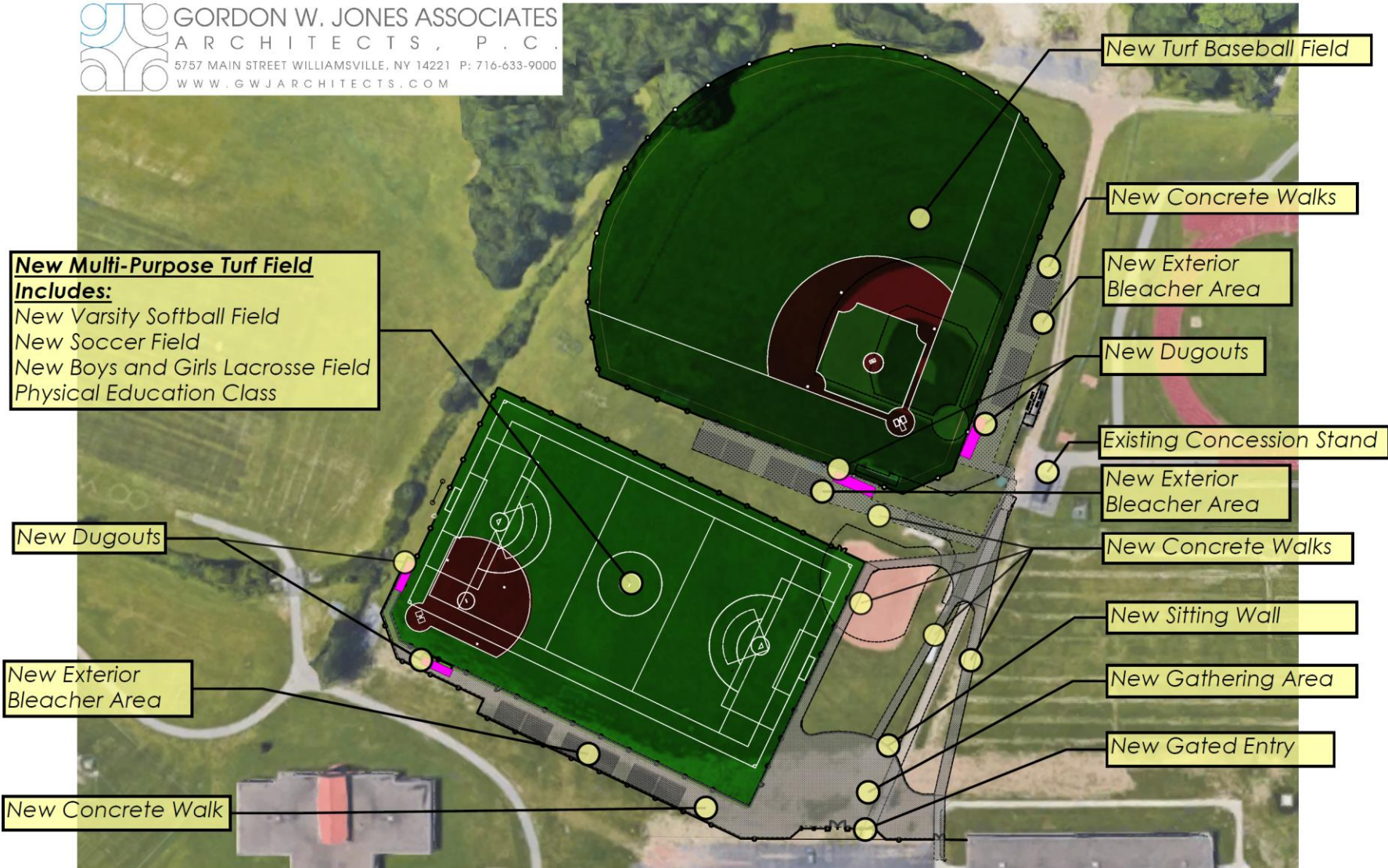
High School: 2nd Floor

PRELIMINARY KEY PLAN- SECOND FLOOR ①

SCALE: NTS

High School: Athletic Fields

 GORDON W. JONES ASSOCIATES
ARCHITECTS, P.C.
5757 MAIN STREET WILLIAMSVILLE, NY 14221 P: 716-633-9000
WWW.GWJARCHITECTS.COM



PRELIMINARY SITE PLAN- HIGH SCHOOL- MULTI-PURPOSE ATHLETIC FIELD

Potential Project Timeline

Construction Phase	Anticipated Areas of Work	Anticipated Dates
Phase 1	<ul style="list-style-type: none"> Elementary Playgrounds Pinehurst Elementary (Part 1) Big Tree Elementary Blasdell Elementary Cloverbank Elementary High School Varsity Baseball Field High School Multi-Purpose Field 	2022-2023
Phase 2	Middle School	2023-2024
Phase 3	High School	2024-2026
Phase 4	Pinehurst Elementary (Part 2)	2027-2028

Referendum
July 20, 2021



Design Phase



SED Review &
Approval



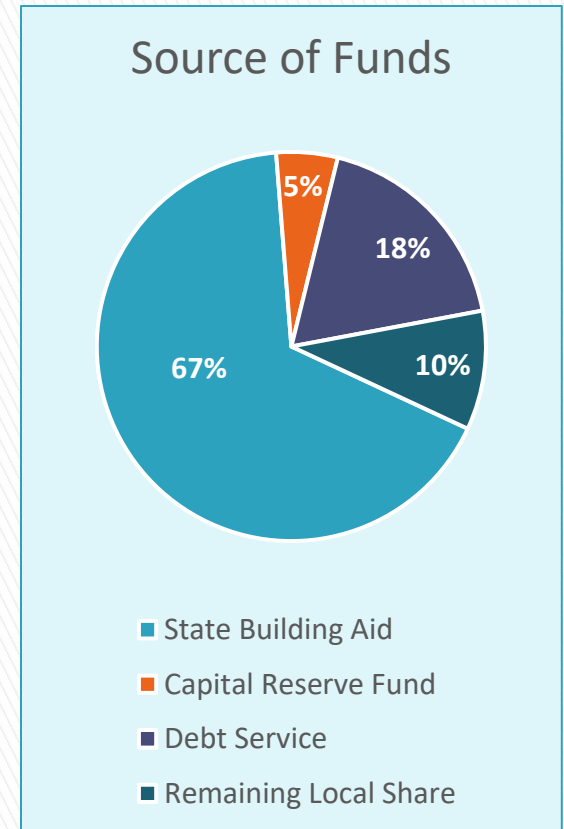
Bidding &
Award



Construction
Commences

Project Financing Plan

- ▶ **Total Project Budget:** \$70,116,550
- ▶ **Available Funding Sources:**
 - NYS Building Aid
 - Capital Reserve Fund
 - Local Tax Levy
- ▶ **No tax increase until 2024-2025 school year**
- ▶ **Incremental “stepped” increase to occur over following 3 years**



Annual Marginal Tax Increase

Town/School Year	2021-22	2022-23	2023-24	2024-25	2025-26	2026-27	Total
Hamburg	\$0			\$92.38	\$22.61	\$9.73	\$124.72
Eden	\$0			\$77.63	\$18.98	\$8.17	\$104.78

Amounts above are based on \$100,000 assessed/equalized home value

Additional Information Sources

Please Vote



July 20th

- ▶ **Capital Project Overview:** Fact sheet available online and in schools
- ▶ **Capital Project Newsletter:** Mailed to every district household
- ▶ **Public Information Meetings:** July 13th and July 15th
- ▶ **District web site:** www.frontiercsd.org/soar-project

**PUBLIC
VOTE**

Tuesday, July 20th

7:00 a.m. – 9:00 p.m.

Hamburg Senior Community Center Gymnasium

4540 Southwestern Blvd., Hamburg

Contact the District Clerk for absentee ballot information.

Exit Poll Survey

USING THE CAMERA ON YOUR PHONE,
POINT TO THE CODE BELOW AND CLICK
ON THE LINK THAT SHOWS ON YOUR
SCREEN



Questions?

- ▶ **Frequently Asked Questions** are addressed here:
 - On the District web site at www.frontiercsd.org/soar-project
 - Capital Project Newsletter (*Special Capital Project Issue*)
- ▶ For answers to additional questions, please send an email to:

Mr. Christopher Swiatek
Superintendent of Schools
cswiatek@frontiercsd.org

C. Douglas Whelan, Ed.D.
Interim Assistant Superintendent
for Finance & Operations
dwhelan@frontiercsd.org

Frontier Central School District

